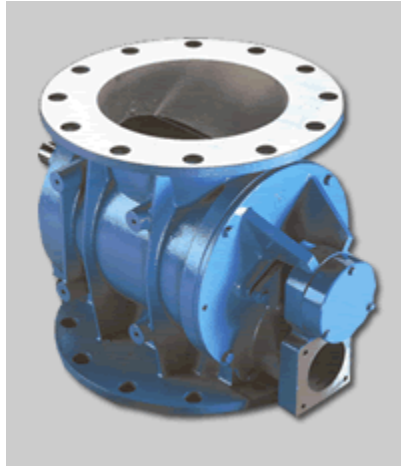


Spécialistes en mécanique de procédés et du contrôle de l'environnement industriel  
Mechanical Process and Industrial Environmental Control Specialists

## Blow Through Standard Rotary Valve



Blowing seals have been introduced to meet the specific needs of the pneumatic conveying industry and are a natural extension to the Rotary Airlock, both being used to regulate the flow of dry powder, dust or granular product, while maintaining an airlock.

However, the Blowing Seal has distinct advantages for the specialist as it introduces high pressure conveying air through the valve body and rotor pocket ensuring - HIGH EFFICIENCY THROUGHPUT WITH LOW EFFECTIVE PRESSURE DROP.

This is achieved by the fact that more blades are in contact for longer periods with the valve body resulting in less air leakage - and by blowing through the rotor each rotor pocket is efficiently emptied.

The Rotolok range of seals are robustly constructed with an emphasis on close tolerances and minimal eccentricities, making the unit suitable for the majority of pneumatic conveying applications.

### Features

- Maximum number of blades in contact with body at one time without affecting throughput
- Streamlined entry and discharge of conveying air through valve.
- Good throat opening at valve entry allowing high pocket filling efficiency.
- Compact design minimizing headroom.
- Minimum clearance at rotor tips and sides with body.
- Robust body adequately stiffened to prevent distortion.
- Heavy shaft diameters minimising deflection.
- Outboard bearings for non-contamination - Option for High Temperature.
- Packing gland type seals with air purging option.
- Precision machining of components.
- Abrasive duty types.

### Specifications

<b>Bodies</b>
Cast Iron, Stainless Steel precision machined.
<b>End Covers</b>
Cast Iron, Stainless Steel or Aluminium spigot located in body.
<b>Rotor</b>
Fabricated Mild or Stainless Steel fixed blade open type.
<b>Bearings</b>
Ball type sealed-for-life - alternative high temperature to 400°C.
<b>Shaft Seal</b>
Gland type with PTFE packing.
<b>Drive</b>
TEFC geared motor unit side wall mounted to valve body and complete with taper lock chain drive all in an enclosed guard. Optional Flameproof, variable speed etc.

Montréal • Québec • Toronto • Boston

4070 boul. Poirier, St-Laurent, Québec, Canada H4R 2A5  
Tél.: (514) 337-3377 • Fax: (514) 832-0989 • [www.dynagroup-tech.com](http://www.dynagroup-tech.com)

The chart below gives theoretical and estimated throughputs on the basis of rotor speed.

The theoretical figure is seldom achieved in practice as density, product characteristics, pressure differential, feeding methods, all affect the valve throughput.

On these considerations the estimated figures are assessed and are more acceptable for selecting the correct valve.

e.g. Select a valve to handle 7.5 tons/hour of flour at 34 lb/cu. ft. Volume required = 7.5 x 2200 over 34 = 485 cu. ft/hr.

From the chart the 280 unit running at 18 rpm covers this requirement.

Certain products when fluidised can exceed the conservative ratings. Similarly, light products - 10lb/cu.ft. the opposite effect can occur.

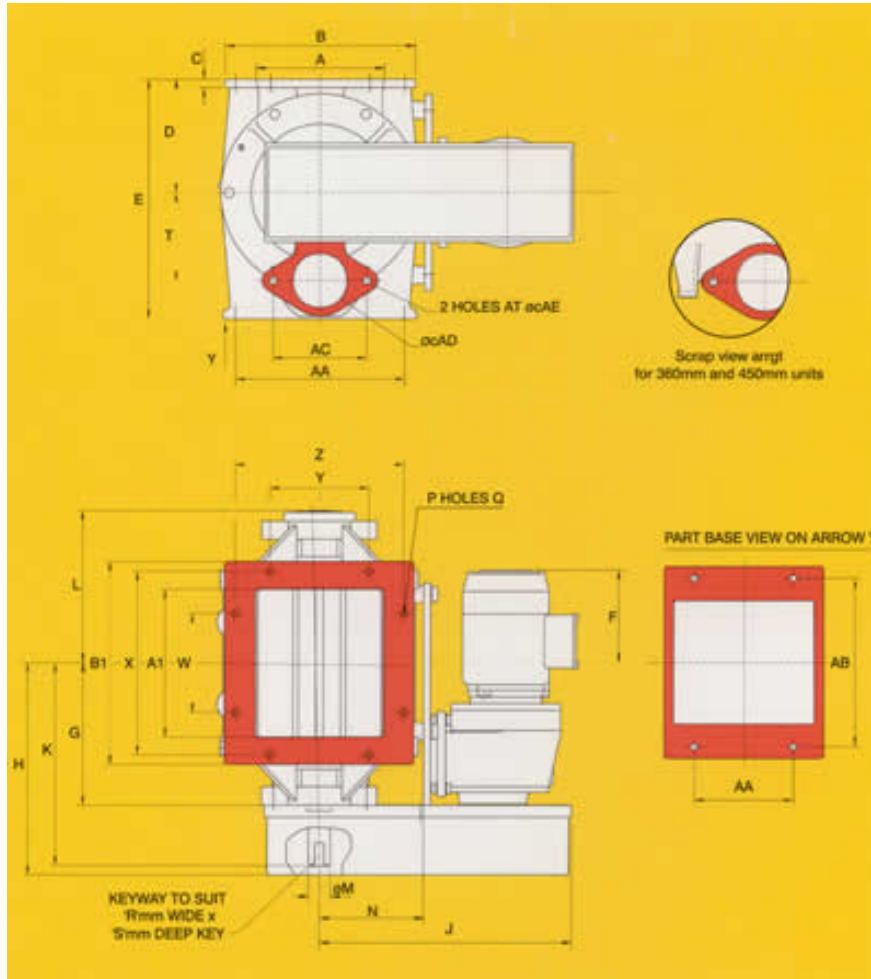
IF IN DOUBT CONSULT OUR TECHNICAL DEPARTMENT.

Capacity Chart in Cubic Feet/Hr													
<b>450</b>	120	600	960	1200	1440	1680	1920	2160	2400	2640	2880	3120	100%
	120	600	920	1128	1320	1510	1670	1790	1944	2085	2216	2340	Practical
<b>400</b>	104	519	830	1037	1245	1452	1660	1867	2075	2282	2490	2697	100%
	104	517	789	933	1096	1249	1394	1512	1618	1689	1768	1834	Practical
<b>360</b>	66	330	528	660	792	924	1056	1188	1320	1452	1584	1716	100%
	66	330	507	620	725	830	915	986	1068	1147	1218	1287	Practical
<b>300</b>	45.4	227	363	454	545	636	727	818	908	999	1090	1181	100%
	45.4	227	354	409	480	547	611	663	708	739	774	803	Practical
<b>280</b>	32.5	162	260	325	390	455	520	585	650	715	780	845	100%
	32.5	162	249	305	355	405	450	485	526	564	600	634	Practical
<b>250</b>	25.6	128	205	256	307	359	410	461	512	564	615	666	100%
	25.6	128	195	230	270	309	344	373	399	417	437	453	Practical
<b>240</b>	17	85	136	170	204	238	272	306	340	374	408	442	100%
	17	85	130	160	184	212	235	254	275	296	314	331	Practical
<b>200</b>	12.3	62	98	123	148	172	197	221	246	271	295	320	100%
	12.3	62	94	116	135	150	171	183	199	214	227	240	Practical
<b>150</b>	5.0	25	40	50	60	71	81	91	101	111	121	131	100%
	5.0	25	38	45	53	61	68	74	79	82	86	89	Practical
<b>125</b>	2.7	13.5	25.5	27	32.5	38	43	49	54	59	65	70	100%
	2.7	13.5	20.5	24	29	32.5	37	40	42	44	46	48	Practical
	<b>1</b>	<b>5</b>	<b>8</b>	<b>10</b>	<b>12</b>	<b>14</b>	<b>16</b>	<b>18</b>	<b>20</b>	<b>22</b>	<b>24</b>	<b>26</b>	
<b>Rotor Speed RPM</b>													

*Dynagroup Technologies*

4070 boul. Poirier, St-Laurent, Québec, Canada H4R 2A5  
 Tél.: (514) 337-3377 • Fax: (514) 832-0989 • [www.dynagroup-tech.com](http://www.dynagroup-tech.com)

# Rectangular



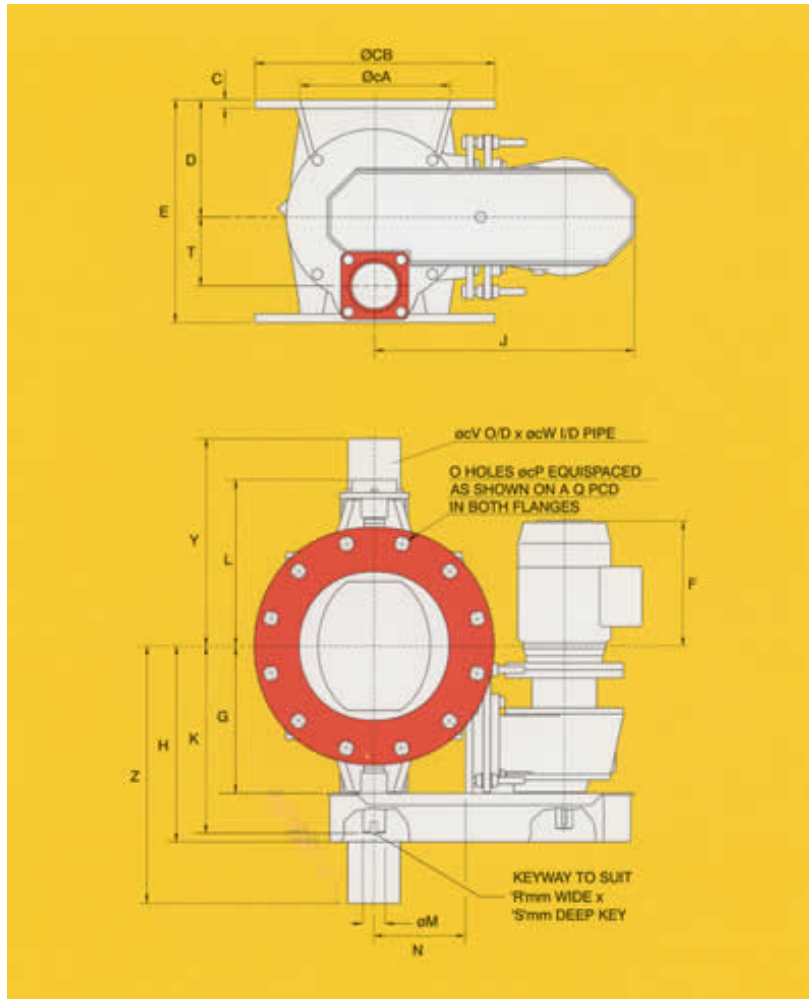
Rectangular Blowing Seal																
Valve Size	Size	A	A1	B	B1	C	D	E	F	G	H	J	K	L	M	N
	125	125	125	205	205	12	110	240	225	159	252	405	219	180	28	95
	200	200	200	300	300	12	160	340	185	199	290	405	258	218	28	125
	240	180	200	280	280	15	180	340	233	225	318	435	286	244	40	165
	280	225	270	345	370	15	206	436	200	259	352	460	320	278	40	190
	360	255	350	350	450	15	240	466	143	315	443	595	386	333	50	227
	450	310	400	410	510	15	290	500	108	350	478	625	421	370	50	270

Valve Size	Size	P	Q	R	S	T	W	X	Y	Z	AA	AB	AC	AD	AE	H.P.
	125	8	10	8	7	80	90	170	90	170	90	125	95	50	1135	0.5
	200	8	13	8	7	100	130	270	130	270	130	190	130	75	11.5	0.5
	240	8	*	12	8	110	130	250	100	250	130	225	110	65	14	1
	280	8	13	12	8	160	180	335	180	307	180	30	170	98	14	1
	360	10	14	14	9	200	300	420	180	320	300	320	180	110	14	1.5
	450	10	14	14	9	230	320	480	220	380	320	380	200	125	14	1.5

*Dynagroup Technologies*

4070 boul. Poirier, St-Laurent, Québec, Canada H4R 2A5  
 Tél.: (514) 337-3377 • Fax: (514) 832-0989 • [www.dynagroup-tech.com](http://www.dynagroup-tech.com)

# Round



		Round Blowing Seal											
Valve Size	Size	A	B	C	D	E	F	G	H	J	K	L	M
	150	154	285	13	140	270	225	192	266	400	260	218	30
	200	203	343	13	160	310	200	218	291	400	285	243	300
	250	254	406	15	200	380	230	251	335	479	320	262	35
	300	305	483	19	240	465	200	281	365	520	350	292	35
	400	406	597	19	300	580	110	347	475	565	456	354	60

Valve Size	Size	N	O	P	Q	R	S	T	V	W	Y	Z	H.P.
	150	143	8	22	241	8	7	85	60	52	295	368	0.5
	200	143	8	23	298	8	7	93	73	63	320	393	0.5
	250	155	12	25	362	10	8	117	89	78	354	440	1
	300	195	12	25	432	10	8	142	102	90	384	467	1
	400	235	16	29	540	18	11	178	141	128	450	568	0.5

*Dynagroup Technologies*

4070 boul. Poirier, St-Laurent, Québec, Canada H4R 2A5  
 Tél.: (514) 337-3377 • Fax: (514) 832-0989 • www.dynagroup-tech.com